

50 YEARS

FINE | LINE
HOMES

A two-story house with green siding, stone accents, and a two-car garage. The house features a gabled roof with white trim, a front porch with white columns, and a two-car garage with green doors. The exterior is finished with green horizontal siding and stone veneer on the central section. The house is set against a blue sky with white clouds.

PLAN GUIDE

info@finelinehomes.com | finelinehomes.com | 866.806.4420

TABLE OF CONTENTS

Introduction	1	Charleston	19	Madison	41
Choosing a Builder	2	Georgetown	20	Clarksville	42
Steps To Building	3	Jamestown	21	Fenwick	43
Top 5	4	Belmont	22	Hudson	44
		Stanford	23	Greenville	45
TWO STORY HOMES		Cumberland	24	Monterey	46
Kirkwood	6	Frankford	25	Rutherford	47
Deerfield	7	Knoxville	26	Winslow	48
Grant	8	Burlington	27		
Edison	9	Arlington	28	CAPE COD HOMES	
Cameron	10	Meridian	29	Hatteras	51
Vicksburg	11	Brookville	32	Newport	52
Lexington	12	Manhattan	33	Nottingham	53
Branson	13			Oakridge	54
Richmond	14	RANCH HOMES			
Abilene	15	Jefferson	37		
Lockport	16	Monroe	38		
Baywood	17	Roanoke	39		
Wakefield	18	Austin	40		

FIND A FLOOR PLAN (A-Z)

Abilene	15	Fenwick	43	Manhattan	33
Arlington	28	Frankford	25	Meridian	29
Austin	40	Georgetown	20	Monroe	38
Baywood	17	Grant	8	Monterey	46
Belmont	22	Greenville	45	Newport	52
Branson	13	Hatteras	51	Nottingham	53
Brookville	32	Hudson	44	Oakridge	54
Burlington	27	Jamestown	21	Richmond	14
Cameron	10	Jefferson	37	Roanoke	39
Charleston	19	Kirkwood	6	Rutherford	47
Clarksville	42	Knoxville	26	Stanford	23
Cumberland	24	Lexington	12	Vicksburg	11
Deerfield	7	Lockport	16	Wakefield	18
Edison	9	Madison	41	Winslow	48

INTRODUCTION

Fine Line Homes is a family owned company that started building stick-built homes in Harrisburg, Pennsylvania in 1972.

With more than 50 years of experience, we are fortunate to perform the ongoing work of building dreams for our customers. We have grown to six regional offices serving the majority of Pennsylvania, the southern tier of New York, and the Triad region of North Carolina. All Fine Line Homes offices are full service, building on our land or yours, as well as providing an inventory of “Ready Now” new houses.

Our team has worked hard to develop a methodical home building approach that has been executed and improved upon systematically for more than 50 years. It’s a strategy that both exceeds building standards and meets our rigorous expectations, ultimately delivering a home that is built to last.

We hope you will enjoy the following pages that detail over 50 plans available to you. Each of them has an extensive list of available design customizations to suit your preferences and goals. We also took the liberty of showing you some of the most popular design upgrades – trends that we’re seeing across the industry, so that you can see what can be done.

Enjoy browsing through the possibilities!



CHOOSING A BUILDER

Your home represents one of the largest investments you will ever make. The selection of your builder is critical. Here are some things to consider.

REPUTATION.

A home builder may claim to be the best, but their reputation is earned among their customers as well as their suppliers and tradespeople. What do their clients and vendors have to say? Are they members of the Better Business Bureau? What is the consistency of their online reviews?

EXPERIENCE.

Experienced builders are in a better position to deliver consistent high quality. Long-standing relationships with the better suppliers and sub-contractors are one reason why. The financial security of an established builder means they will be there for their customers beyond the move-in date.

WRITTEN WARRANTIES.

Almost any product you purchase is backed by a written warranty in case something goes wrong. Don't accept a verbal warranty! With written warranties, you know what to expect. Ensure your written warranty provides coverage beyond one year and is offered through an independent third-party.

CLARITY.

In building a house, false assumptions can arise from poor communications. Look for builders who will review the building process and share this information in writing. The builder should provide regular client communication throughout the entire process.

YOUR HOME YOUR WAY.

Most builders offer little to no customization in their home plans. While an inflexible policy makes it easier for a home builder, you'll want to work with a builder who offers innovative home designs and will customize the plans and products to your preferences.

FAIR, TRANSPARENT PRICING.

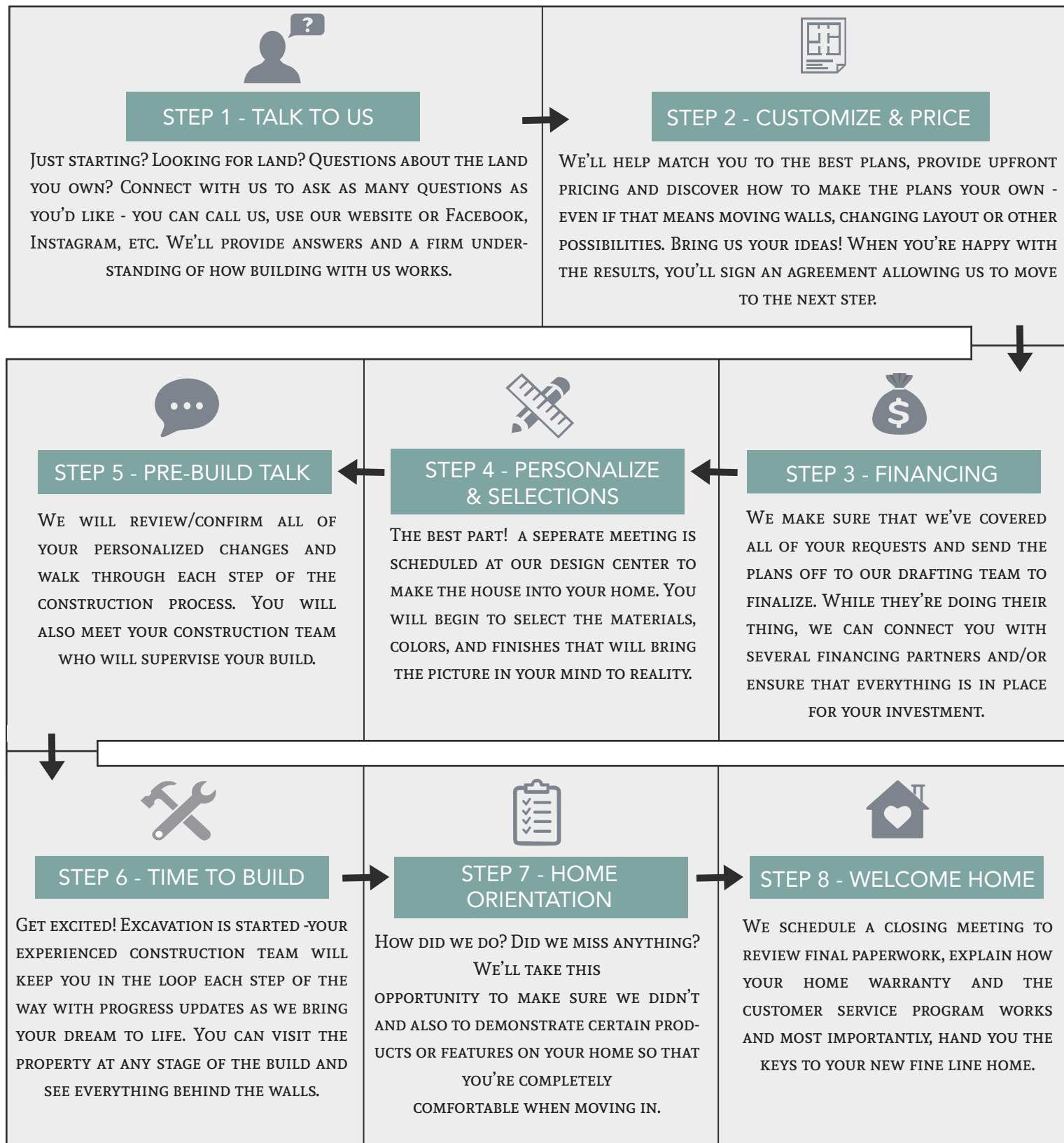
Choose a builder who can provide prompt, guaranteed pricing in writing. A home builder who has a design/product selections center makes it easy to understand what's included in the price quoted. Do not contract your new home with a builder who provides product "allowances" before you have visited each of the vendors to see just what those allowances can actually purchase.

LIABILITY INSURANCE.

Accidents happen. Make sure your builder has a liability insurance policy and that they insist every sub-contractor carry insurance for the construction of your home.

HOW DOES BUILDING WORK?

THE SIMPLE STEPS TO BUILDING WITH US



WHAT'S DIFFERENT ABOUT FINE LINE?

OUR TOP 5

one

BETTER BUILT

We are proud to include standards that many other builders consider upgrades. It's a tradition here at FLH – no compromises to the building products we put in your home.

two

BUILT ON-SITE

Our homes are stick-built meaning that we build on your site with specifications exceeding most builders and building code requirements. Walls or sections do not come pre-fabricated and shipped – we want to be able to fine-tune the build to your unique land situation.

three

STRONG WARRANTIES

In addition to our 1-year comprehensive warranty, our proven construction practices allow us to back our homes with a 10-year major structural warranty. We stand behind our work and value our customer's satisfaction.

four

EXPERIENCE

We've been building homes since 1972 which has given us the benefit of having many seasoned pros on our team. They've seen a lot and we've solved many unique building situations, each one adding to our portfolio of construction intelligence.

five

TRANSPARENCY

We're upfront about our pricing and we tend to give conservative estimates to be fair to you. Too often customers are trapped into misleading quotes that lowball the costs and can force a no-backing-out situation. We're not hiding from our numbers, you should know exactly what they are and what to expect.

TWO-STORY FLOOR PLANS



THE KIRKWOOD

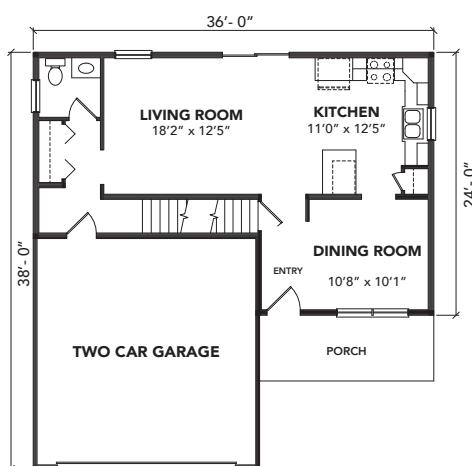
1,588 SF 3 BEDROOMS
2.5 BATHROOMS



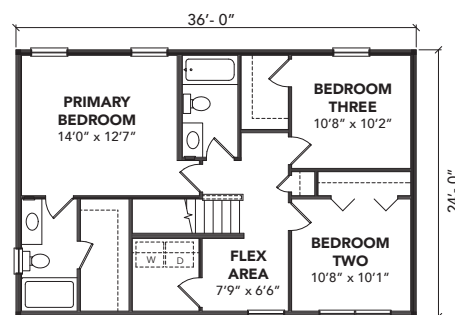
ELEVATION B



ELEVATION A



FIRST FLOOR
(ELEVATION A)



SECOND FLOOR
(ELEVATION A)

FOR MORE INFORMATION, VISIT [FINELINEHOMES.COM](https://finelinehomes.com)

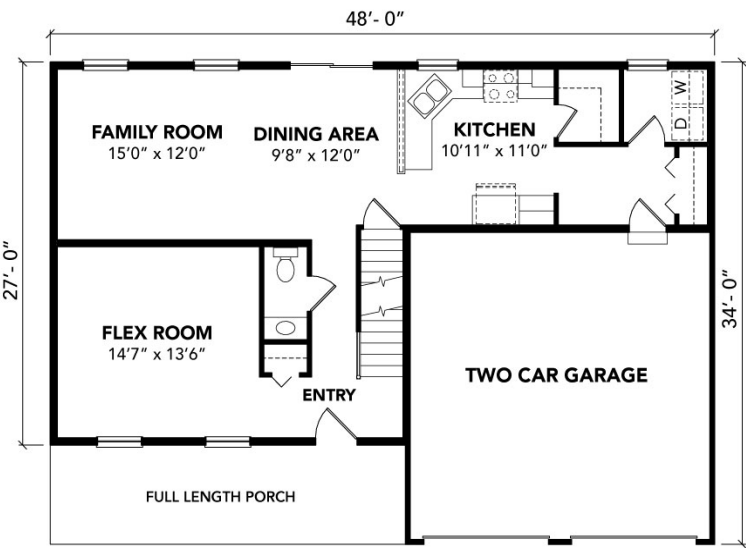
All square footages, floor plans and dimensions are approximate and are subject to change without notice. Plans are shown with options not included in the base pricing and are for illustrative purposes only. Construction drawings and purchase contracts will take precedence over artwork.

THE DEERFIELD

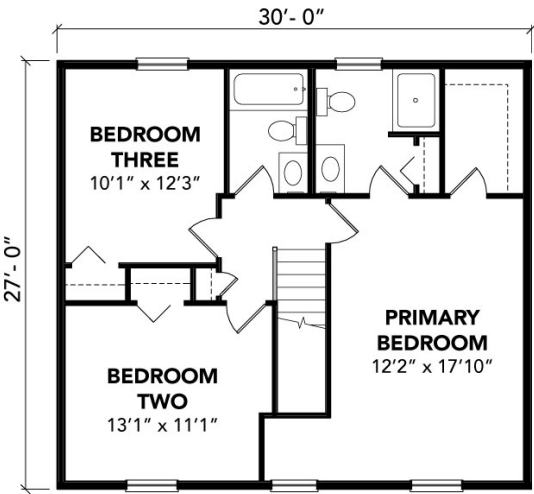
1,776 SF 3 BEDROOMS
2.5 BATHROOMS



ELEVATION A



FIRST FLOOR



SECOND FLOOR

FOR MORE INFORMATION, VISIT FINELINEHOMES.COM

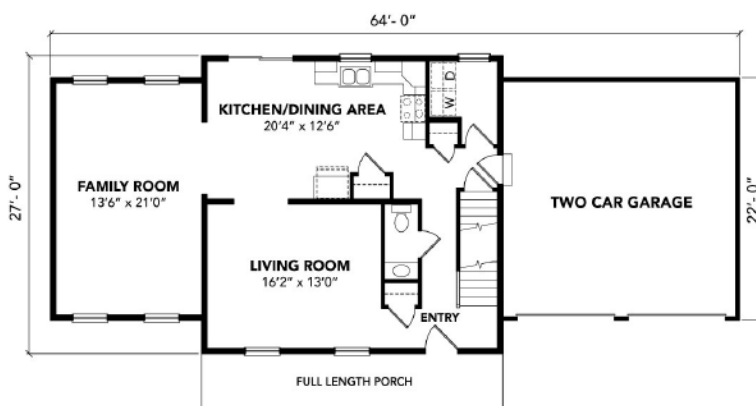
All square footages, floor plans and dimensions are approximate and are subject to change without notice. Plans are shown with options not included in the base pricing and are for illustrative purposes only. Construction drawings and purchase contracts will take precedence over artwork.



ELEVATION A



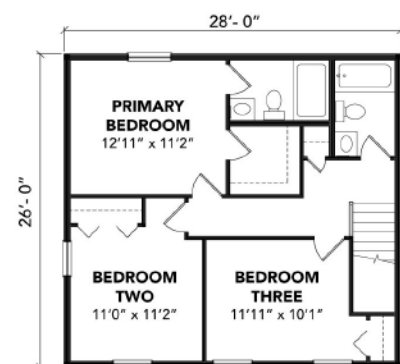
ELEVATION B



FIRST FLOOR

(ELEVATION A)

With Family Room & Garage



SECOND FLOOR

(ELEVATION A)

FOR MORE INFORMATION, VISIT FINELINEHOMES.COM

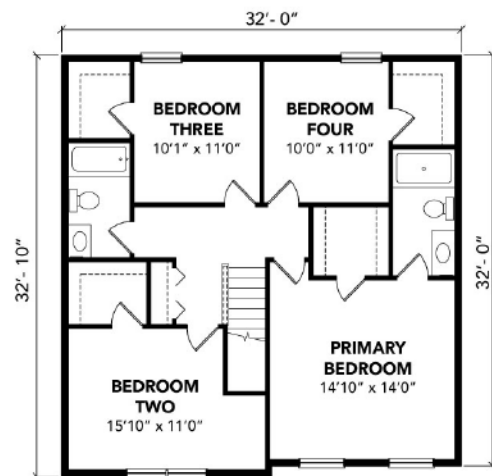
All square footages, floor plans and dimensions are approximate and are subject to change without notice. Plans are shown with options not included in the base pricing and are for illustrative purposes only. Construction drawings and purchase contracts will take precedence over artwork.



ELEVATION A



FIRST FLOOR



SECOND FLOOR

FOR MORE INFORMATION, VISIT [FINELINEHOMES.COM](https://finelinehomes.com)

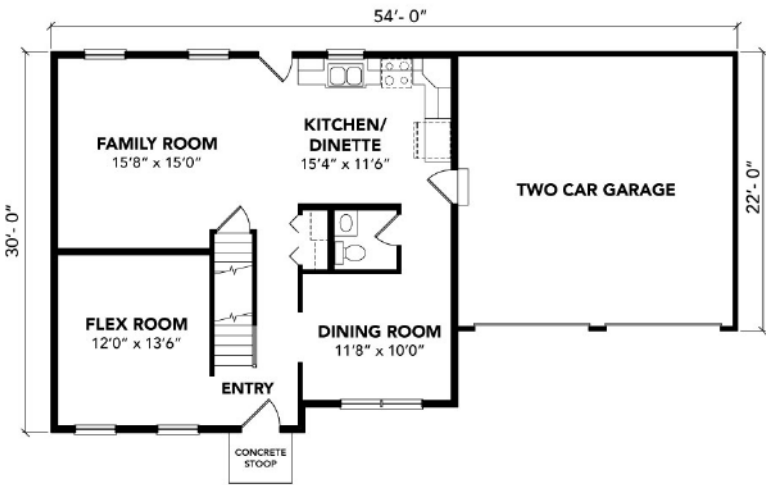
All square footages, floor plans and dimensions are approximate and are subject to change without notice. Plans are shown with options not included in the base pricing and are for illustrative purposes only. Construction drawings and purchase contracts will take precedence over artwork.

THE CAMERON

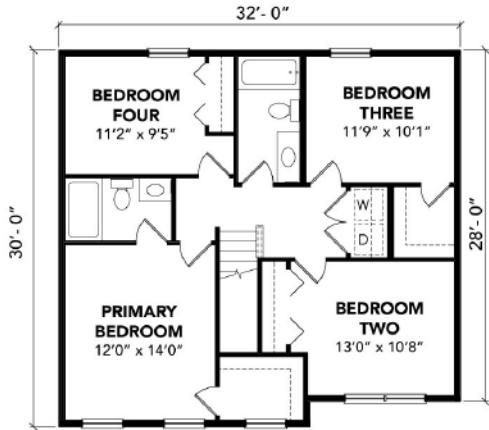
1,872 SF 4 BEDROOMS
2.5 BATHROOMS



ELEVATION A



FIRST FLOOR



SECOND FLOOR

FOR MORE INFORMATION, VISIT [FINELINEHOMES.COM](https://finelinehomes.com)

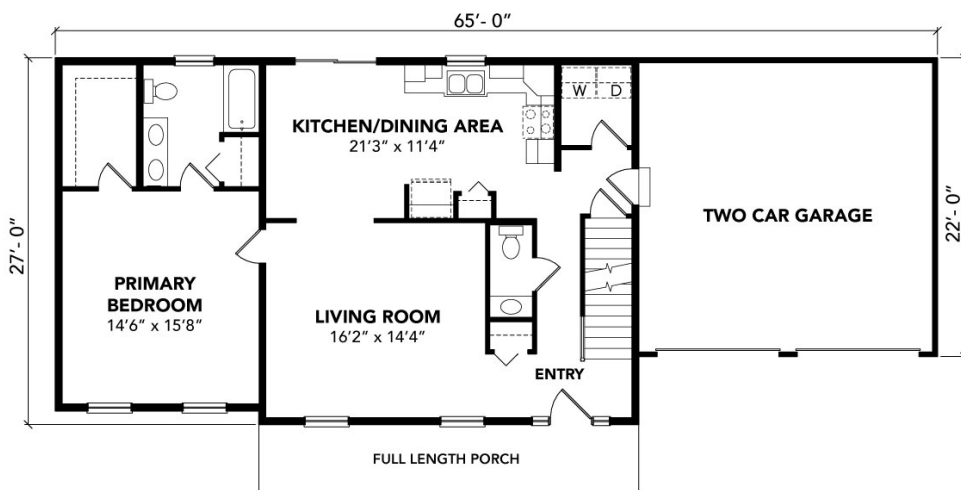
All square footages, floor plans and dimensions are approximate and are subject to change without notice. Plans are shown with options not included in the base pricing and are for illustrative purposes only. Construction drawings and purchase contracts will take precedence over artwork.

THE VICKSBURG

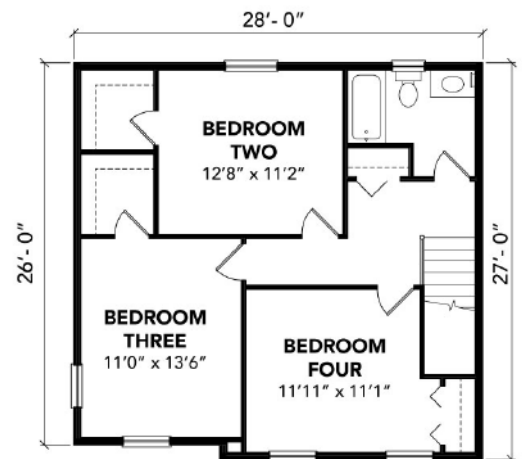
1,892 SF 4 BEDROOMS
2.5 BATHROOMS



ELEVATION A



FIRST FLOOR



SECOND FLOOR

FOR MORE INFORMATION, VISIT [FINELINEHOMES.COM](https://finelinehomes.com)

All square footages, floor plans and dimensions are approximate and are subject to change without notice. Plans are shown with options not included in the base pricing and are for illustrative purposes only. Construction drawings and purchase contracts will take precedence over artwork.

THE LEXINGTON

1,966 SF

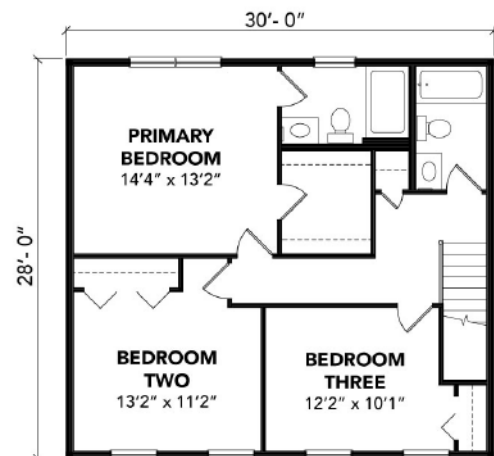
4 BEDROOMS
3 BATHROOMS



ELEVATION A



FIRST FLOOR



SECOND FLOOR

FOR MORE INFORMATION, VISIT FINELINEHOMES.COM

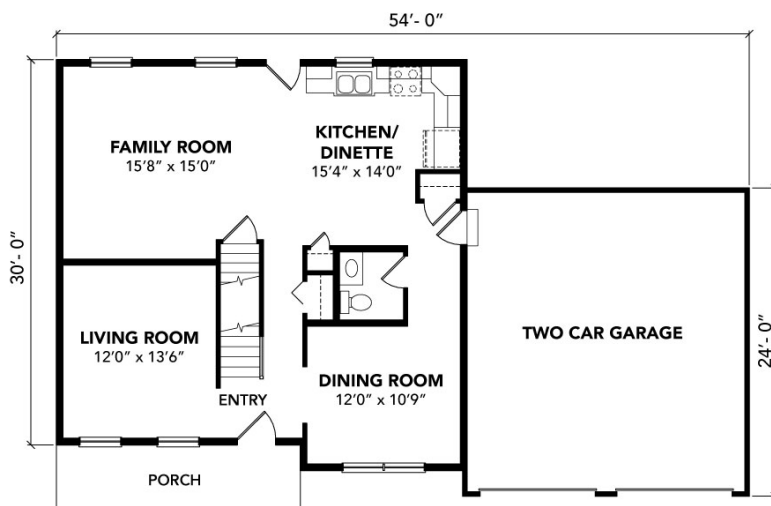
All square footages, floor plans and dimensions are approximate and are subject to change without notice. Plans are shown with options not included in the base pricing and are for illustrative purposes only. Construction drawings and purchase contracts will take precedence over artwork.

THE BRANSON

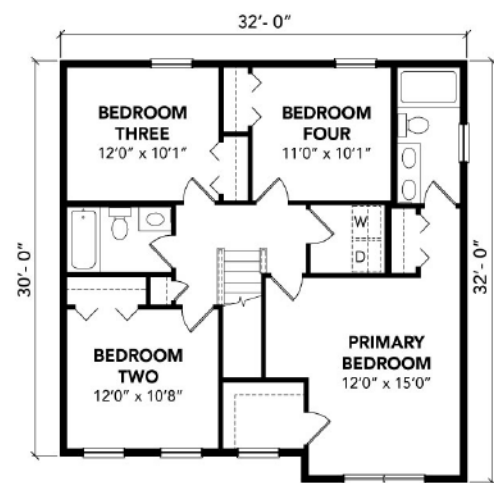
1,970 SF 4 BEDROOMS
2.5 BATHROOMS



ELEVATION A



FIRST FLOOR



SECOND FLOOR

FOR MORE INFORMATION, VISIT FINELINEHOMES.COM

All square footages, floor plans and dimensions are approximate and are subject to change without notice. Plans are shown with options not included in the base pricing and are for illustrative purposes only. Construction drawings and purchase contracts will take precedence over artwork.

THE RICHMOND

2,016 SF 4 BEDROOMS
2.5 BATHROOMS

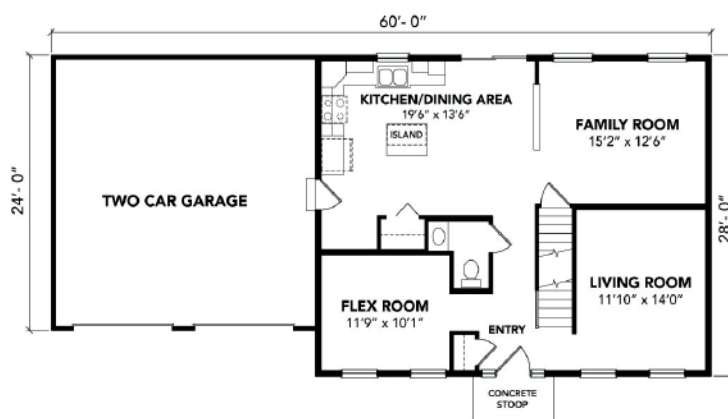
ELEVATION A



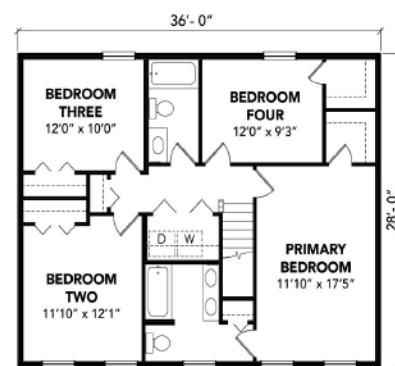
ELEVATION B



ELEVATION C



FIRST FLOOR
(ELEVATION A)



SECOND FLOOR
(ELEVATION A)

FOR MORE INFORMATION, VISIT FINELINEHOMES.COM

All square footages, floor plans and dimensions are approximate and are subject to change without notice. Plans are shown with options not included in the base pricing and are for illustrative purposes only. Construction drawings and purchase contracts will take precedence over artwork.

THE ABILENE

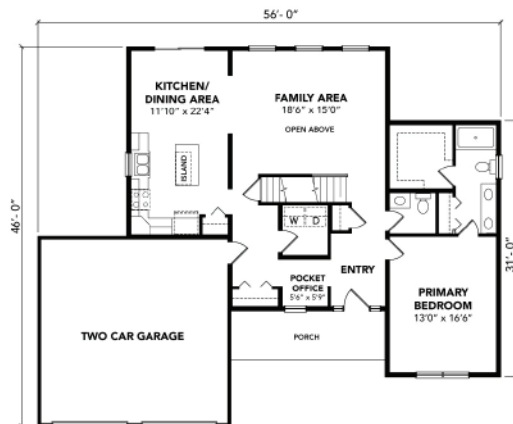
2,072 SF 4 BEDROOMS
2.5 BATHROOMS



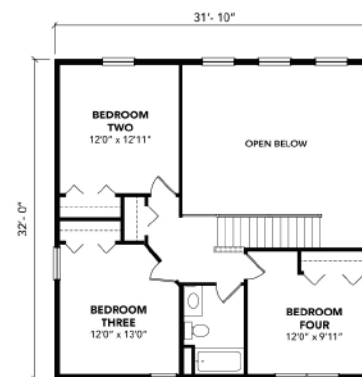
ELEVATION A



ELEVATION B



FIRST FLOOR
(ELEVATION A)



SECOND FLOOR
(ELEVATION A)

FOR MORE INFORMATION, VISIT [FINELINEHOMES.COM](https://finelinehomes.com)

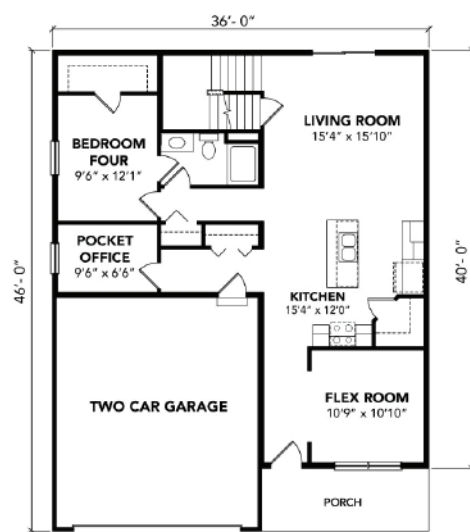
All square footages, floor plans and dimensions are approximate and are subject to change without notice. Plans are shown with options not included in the base pricing and are for illustrative purposes only. Construction drawings and purchase contracts will take precedence over artwork.

THE LOCKPORT

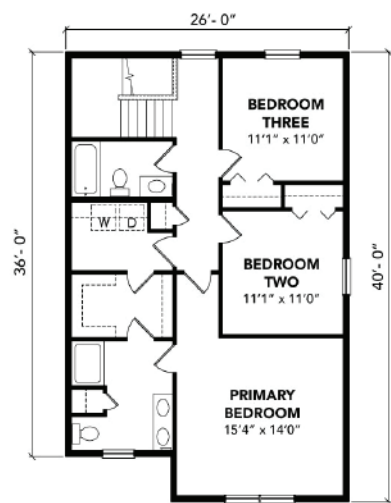
2,120 SF 4 BEDROOMS
3 BATHROOMS



ELEVATION A



FIRST FLOOR



SECOND FLOOR

FOR MORE INFORMATION, VISIT [FINELINEHOMES.COM](https://finelinehomes.com)

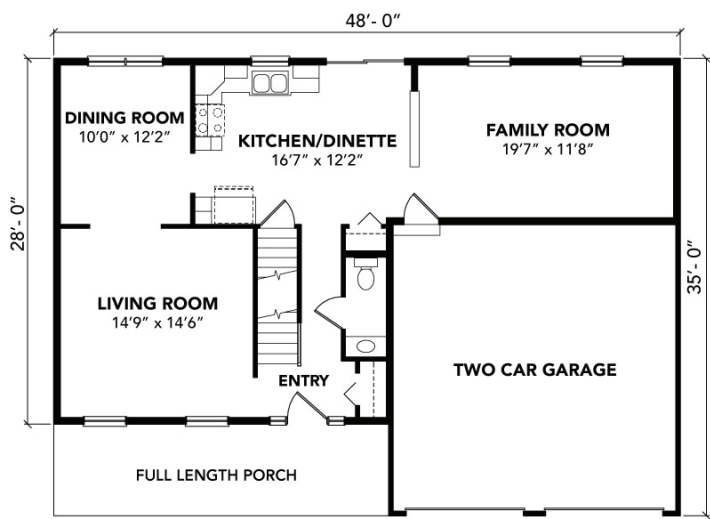
All square footages, floor plans and dimensions are approximate and are subject to change without notice. Plans are shown with options not included in the base pricing and are for illustrative purposes only. Construction drawings and purchase contracts will take precedence over artwork.

THE BAYWOOD

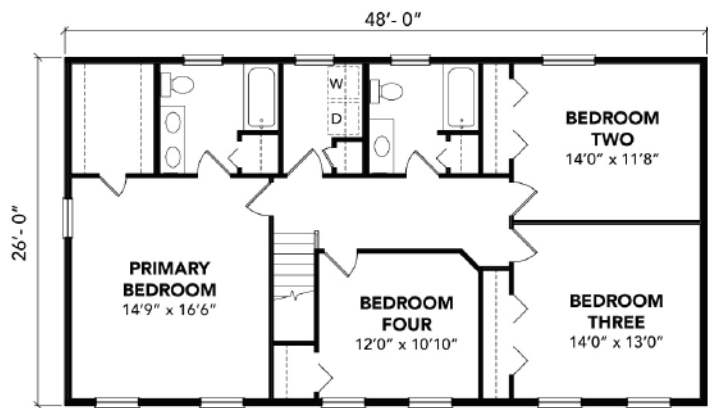
2,256 SF 4 BEDROOMS
2.5 BATHROOMS



ELEVATION A



FIRST FLOOR



SECOND FLOOR

FOR MORE INFORMATION, VISIT [FINELINEHOMES.COM](https://finelinehomes.com)

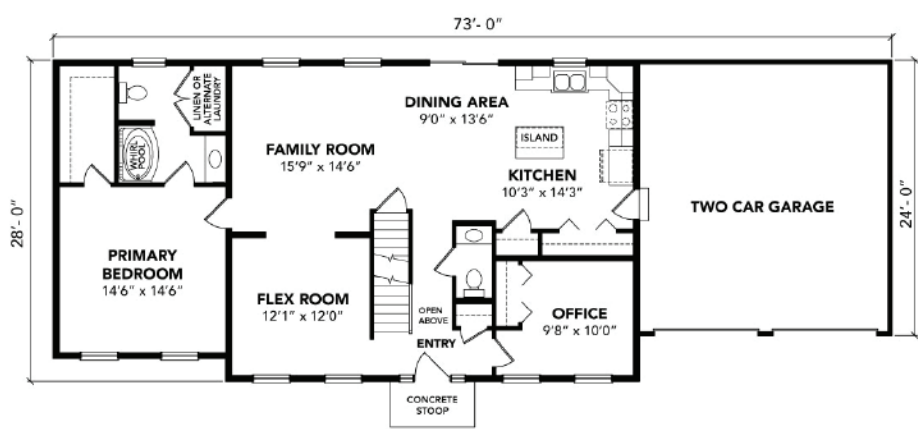
All square footages, floor plans and dimensions are approximate and are subject to change without notice. Plans are shown with options not included in the base pricing and are for illustrative purposes only. Construction drawings and purchase contracts will take precedence over artwork.

THE WAKEFIELD

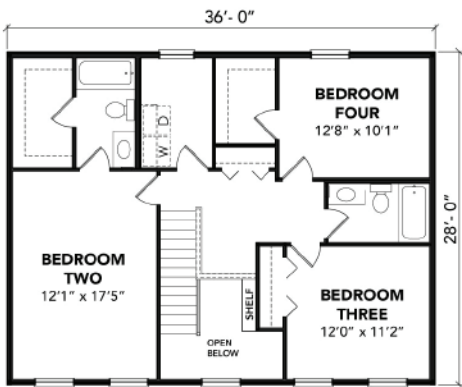
2,343 SF 4 BEDROOMS
3.5 BATHROOMS



ELEVATION A



FIRST FLOOR



SECOND FLOOR

FOR MORE INFORMATION, VISIT [FINELINEHOMES.COM](https://finelinehomes.com)

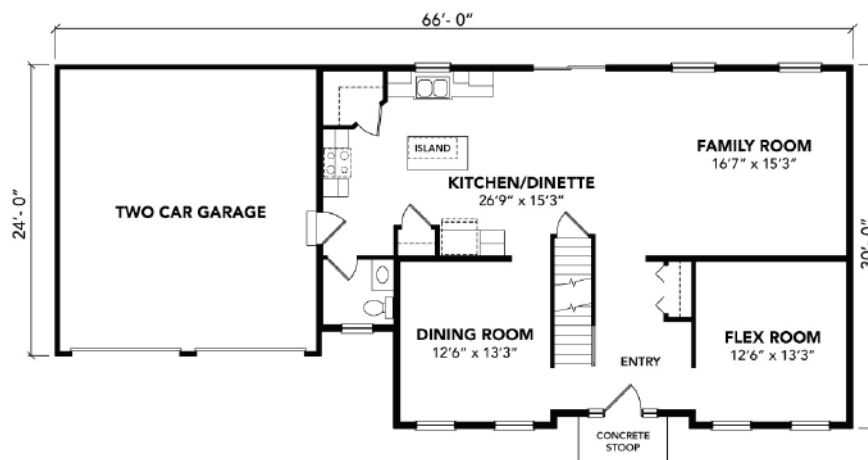
All square footages, floor plans and dimensions are approximate and are subject to change without notice. Plans are shown with options not included in the base pricing and are for illustrative purposes only. Construction drawings and purchase contracts will take precedence over artwork.

THE CHARLESTON

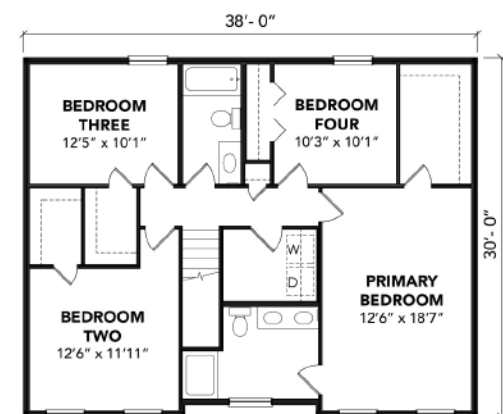
2,397 SF 4 BEDROOMS
2.5 BATHROOMS



ELEVATION A



FIRST FLOOR



SECOND FLOOR

FOR MORE INFORMATION, VISIT FINELINEHOMES.COM

All square footages, floor plans and dimensions are approximate and are subject to change without notice. Plans are shown with options not included in the base pricing and are for illustrative purposes only. Construction drawings and purchase contracts will take precedence over artwork.

THE GEORGETOWN

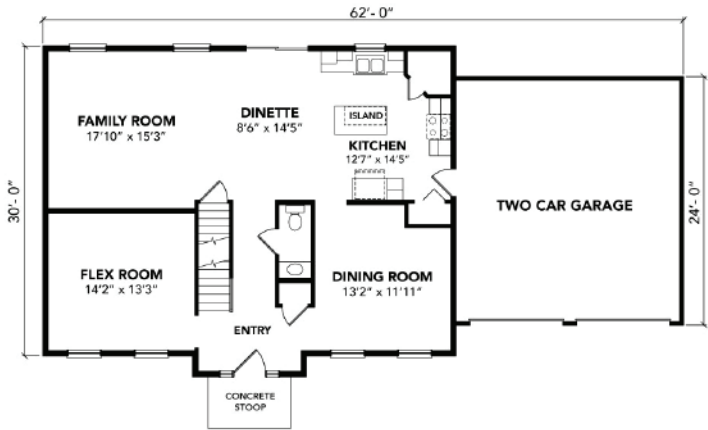
2,444 SF 4 BEDROOMS
2.5 BATHROOMS



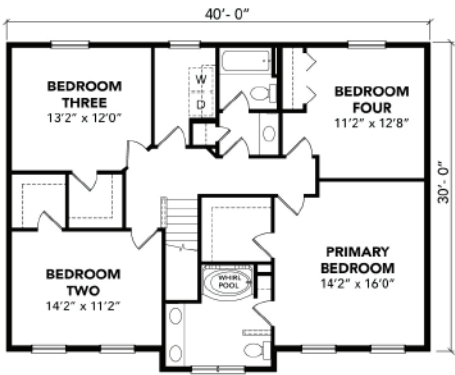
ELEVATION A



ELEVATION B



FIRST FLOOR
(ELEVATION A)



SECOND FLOOR
(ELEVATION A)

FOR MORE INFORMATION, VISIT [FINELINEHOMES.COM](https://finelinehomes.com)

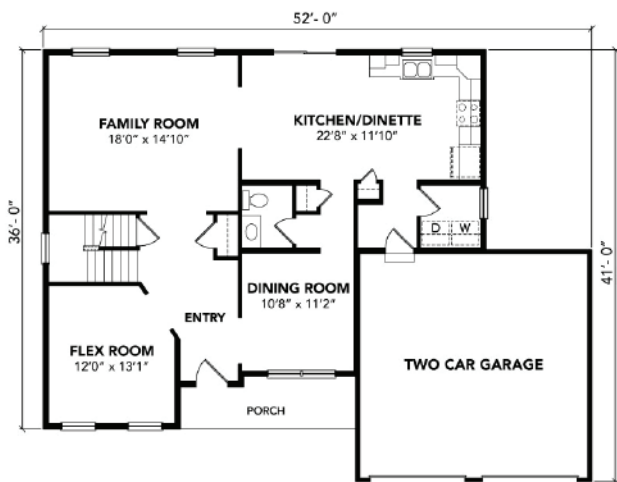
All square footages, floor plans and dimensions are approximate and are subject to change without notice. Plans are shown with options not included in the base pricing and are for illustrative purposes only. Construction drawings and purchase contracts will take precedence over artwork.

THE JAMESTOWN

2,522 SF 4 BEDROOMS
2.5 BATHROOMS



ELEVATION A



FIRST FLOOR



SECOND FLOOR

FOR MORE INFORMATION, VISIT FINELINEHOMES.COM

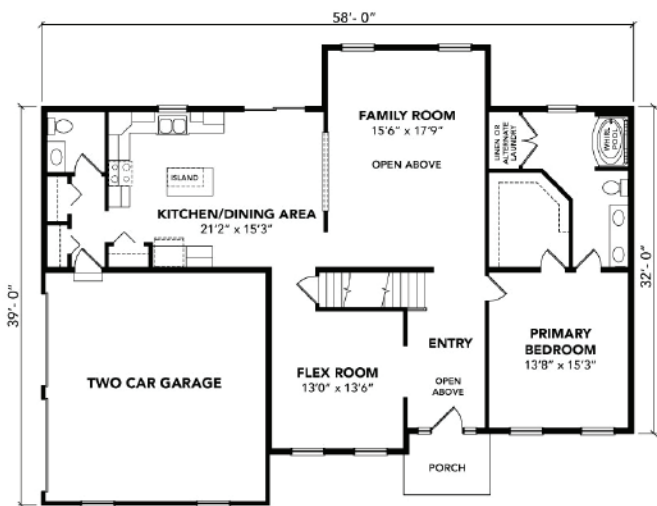
All square footages, floor plans and dimensions are approximate and are subject to change without notice. Plans are shown with options not included in the base pricing and are for illustrative purposes only. Construction drawings and purchase contracts will take precedence over artwork.

THE BELMONT

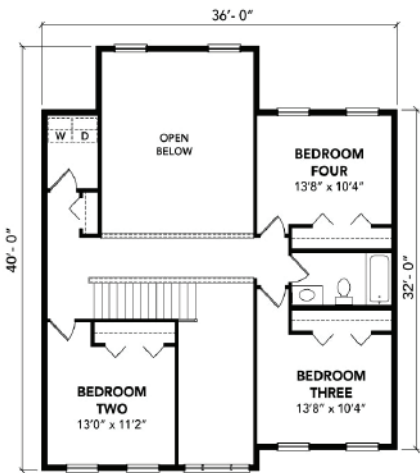
2,538 SF 4 BEDROOMS
2.5 BATHROOMS



ELEVATION A



FIRST FLOOR



SECOND FLOOR

FOR MORE INFORMATION, VISIT [FINELINEHOMES.COM](https://finelinehomes.com)

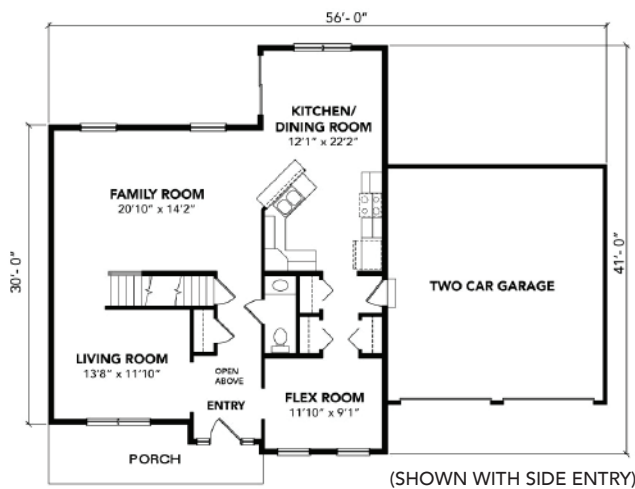
All square footages, floor plans and dimensions are approximate and are subject to change without notice. Plans are shown with options not included in the base pricing and are for illustrative purposes only. Construction drawings and purchase contracts will take precedence over artwork.

THE STANFORD

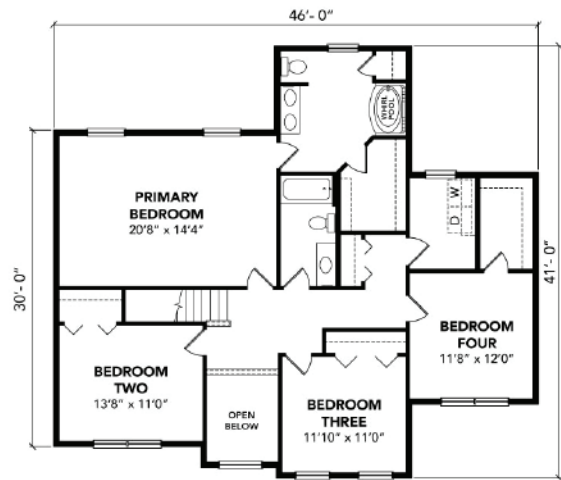
2,553 SF 4 BEDROOMS
2.5 BATHROOMS



ELEVATION A



FIRST FLOOR



SECOND FLOOR

FOR MORE INFORMATION, VISIT [FINELINEHOMES.COM](https://finelinehomes.com)

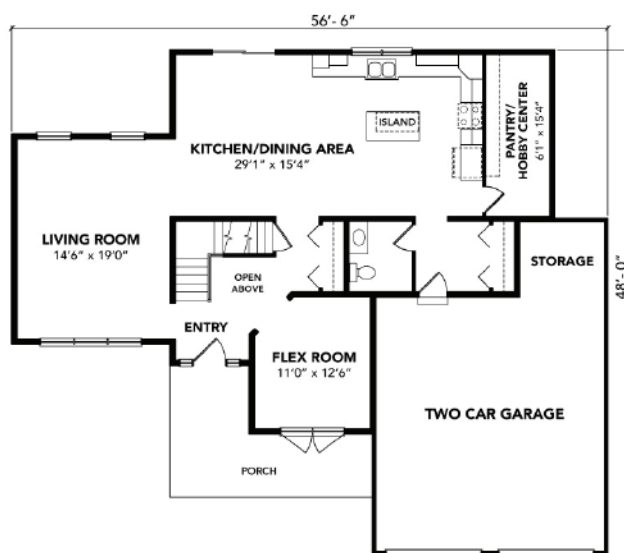
All square footages, floor plans and dimensions are approximate and are subject to change without notice. Plans are shown with options not included in the base pricing and are for illustrative purposes only. Construction drawings and purchase contracts will take precedence over artwork.

THE CUMBERLAND

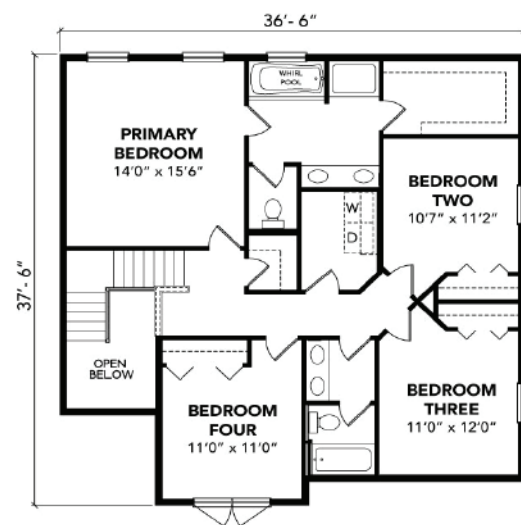
2,562 SF 4 BEDROOMS
2.5 BATHROOMS



ELEVATION A



FIRST FLOOR



SECOND FLOOR

FOR MORE INFORMATION, VISIT FINELINEHOMES.COM

All square footages, floor plans and dimensions are approximate and are subject to change without notice. Plans are shown with options not included in the base pricing and are for illustrative purposes only. Construction drawings and purchase contracts will take precedence over artwork.

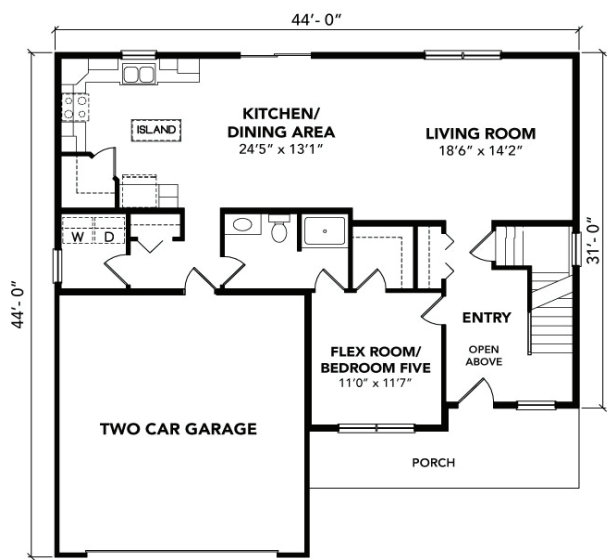
THE FRANKFORD

2,578 SF

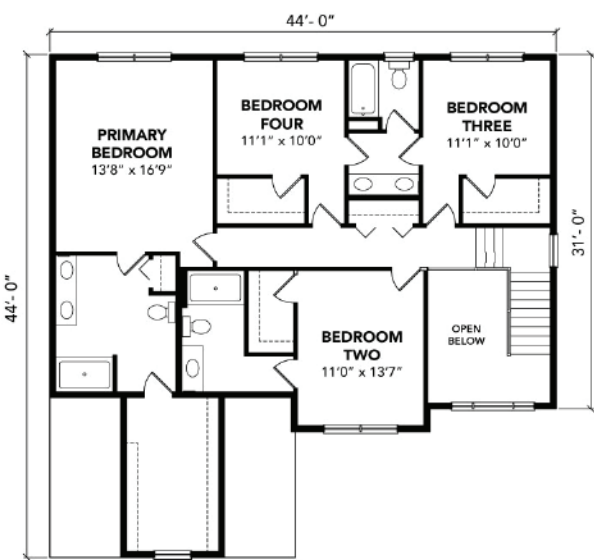
5 BEDROOMS
4 BATHROOMS



ELEVATION A



FIRST FLOOR



SECOND FLOOR

FOR MORE INFORMATION, VISIT [FINELINEHOMES.COM](https://finelinehomes.com)

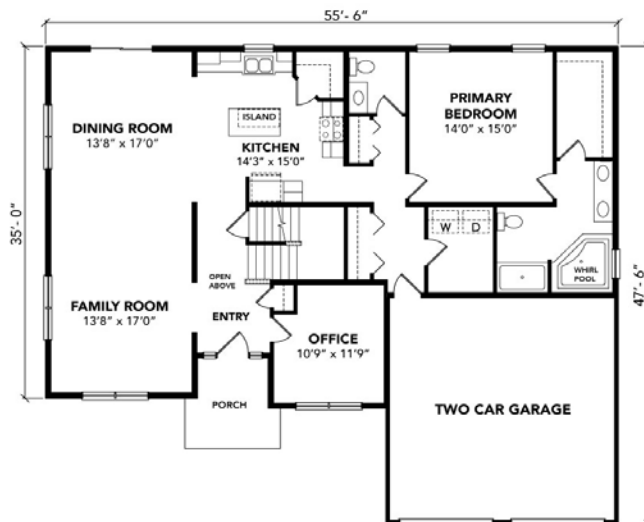
All square footages, floor plans and dimensions are approximate and are subject to change without notice. Plans are shown with options not included in the base pricing and are for illustrative purposes only. Construction drawings and purchase contracts will take precedence over artwork.

THE KNOXVILLE

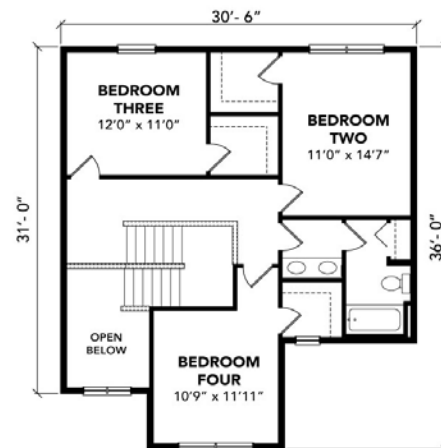
2,590 SF 4 BEDROOMS
2.5 BATHROOMS



ELEVATION A



FIRST FLOOR



SECOND FLOOR

FOR MORE INFORMATION, VISIT FINELINEHOMES.COM

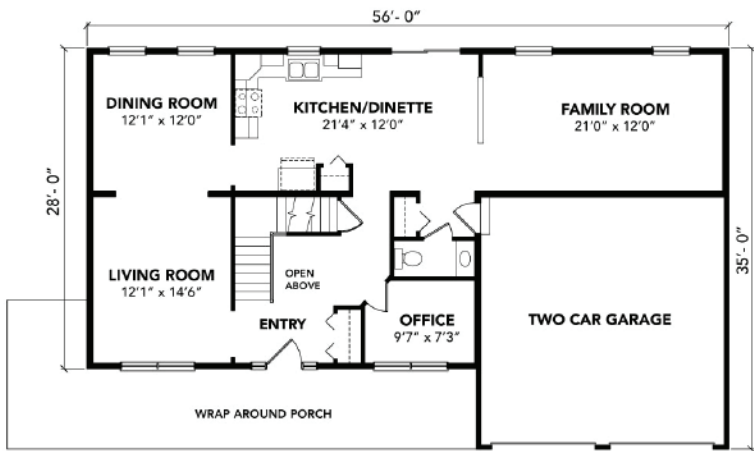
All square footages, floor plans and dimensions are approximate and are subject to change without notice. Plans are shown with options not included in the base pricing and are for illustrative purposes only. Construction drawings and purchase contracts will take precedence over artwork.

THE BURLINGTON

2,688 SF 4 BEDROOMS
2.5 BATHROOMS



ELEVATION A



FIRST FLOOR



SECOND FLOOR

FOR MORE INFORMATION, VISIT [FINELINEHOMES.COM](https://finelinehomes.com)

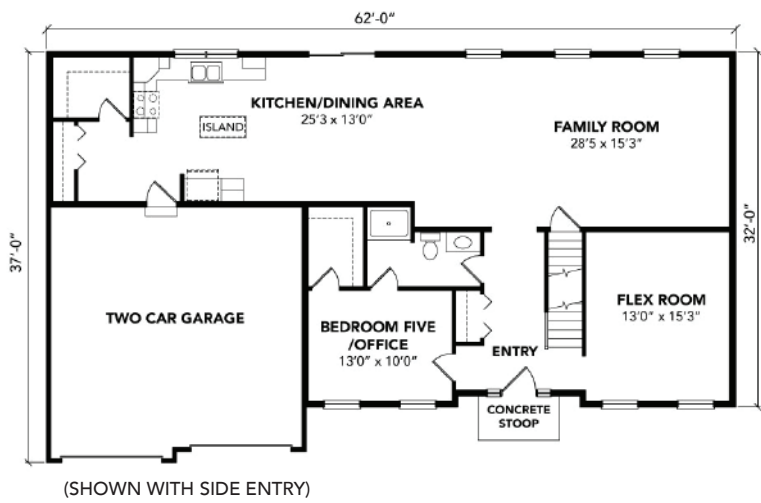
All square footages, floor plans and dimensions are approximate and are subject to change without notice. Plans are shown with options not included in the base pricing and are for illustrative purposes only. Construction drawings and purchase contracts will take precedence over artwork.

THE ARLINGTON

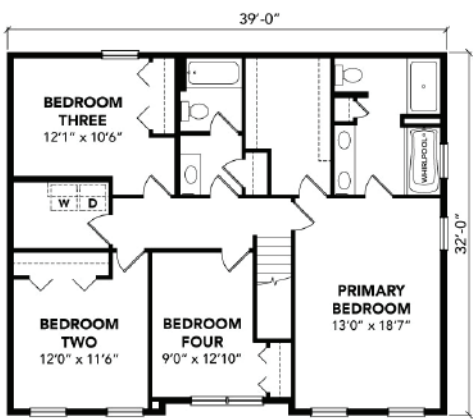
2,796 SF 4 BEDROOMS
2.5 BATHROOMS



ELEVATION A



FIRST FLOOR



SECOND FLOOR

FOR MORE INFORMATION, VISIT [FINELINEHOMES.COM](https://finelinehomes.com)

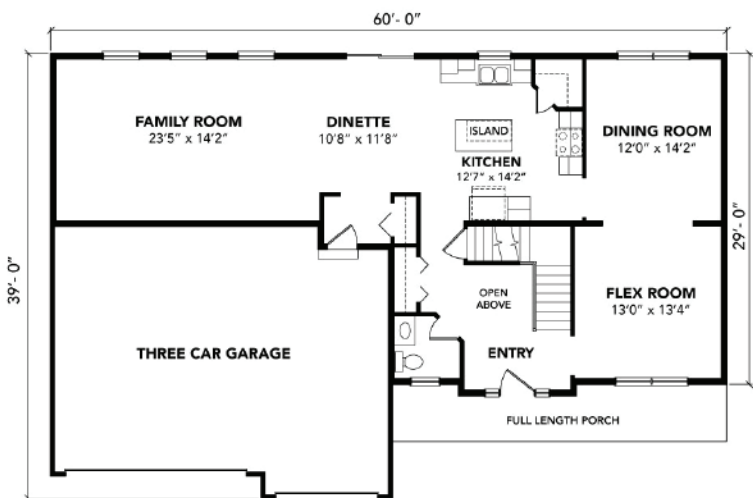
All square footages, floor plans and dimensions are approximate and are subject to change without notice. Plans are shown with options not included in the base pricing and are for illustrative purposes only. Construction drawings and purchase contracts will take precedence over artwork.

THE MERIDIAN

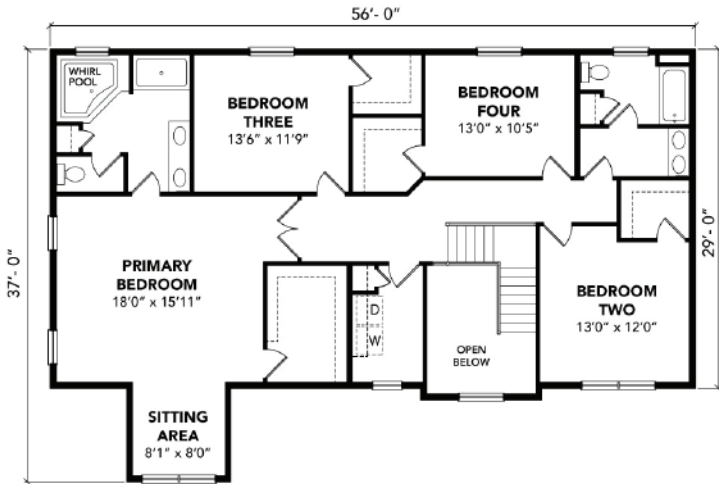
2,969 SF 4 BEDROOMS
2.5 BATHROOMS



ELEVATION A



FIRST FLOOR



SECOND FLOOR

FOR MORE INFORMATION, VISIT [FINELINEHOMES.COM](https://finelinehomes.com)

All square footages, floor plans and dimensions are approximate and are subject to change without notice. Plans are shown with options not included in the base pricing and are for illustrative purposes only. Construction drawings and purchase contracts will take precedence over artwork.





FOR MORE INFORMATION & GALLERIES VISIT [FINELINEHOMES.COM](https://finelinehomes.com)

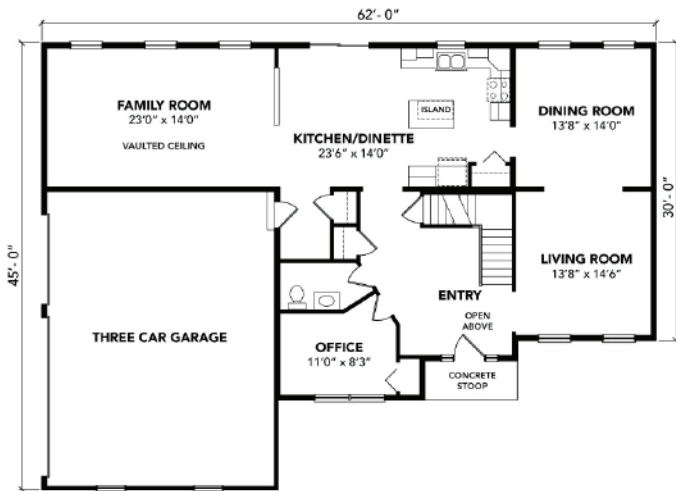


THE BROOKVILLE

3,338 SF 4 BEDROOMS
2.5 BATHROOMS



ELEVATION B



FIRST FLOOR
(ELEVATION A)



SECOND FLOOR
(ELEVATION A)

FOR MORE INFORMATION, VISIT [FINELINEHOMES.COM](https://finelinehomes.com)

All square footages, floor plans and dimensions are approximate and are subject to change without notice. Plans are shown with options not included in the base pricing and are for illustrative purposes only. Construction drawings and purchase contracts will take precedence over artwork.

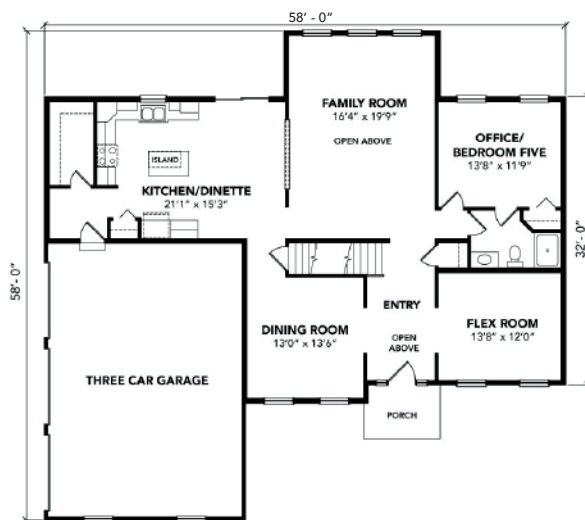
THE MANHATTAN

3,444SF

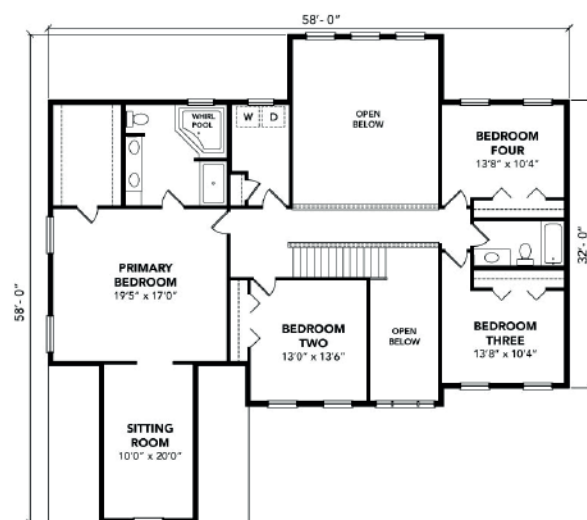
5 BEDROOMS
3 BATHROOMS



ELEVATION A



FIRST FLOOR



SECOND FLOOR

FOR MORE INFORMATION, VISIT FINELINEHOMES.COM

All square footages, floor plans and dimensions are approximate and are subject to change without notice. Plans are shown with options not included in the base pricing and are for illustrative purposes only. Construction drawings and purchase contracts will take precedence over artwork.

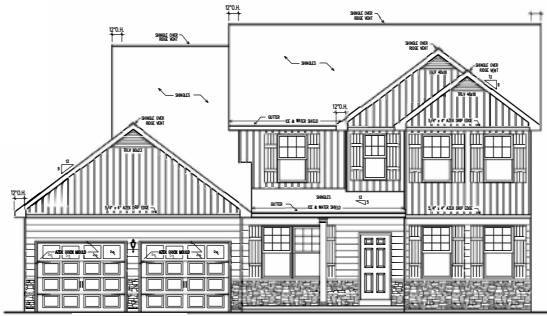


“ There was a true sense of wanting to communicate all those little details every step of the way; they want their customers to feel comfortable with and be educated on each decision that goes into building a new home and how they arrived at those decisions.

- Matthew & Kathryn



FROM CONCEPT TO REALITY...



THE JAMESTOWN



THE BAYWOOD



THE NEWPORT



RANCH FLOOR PLANS



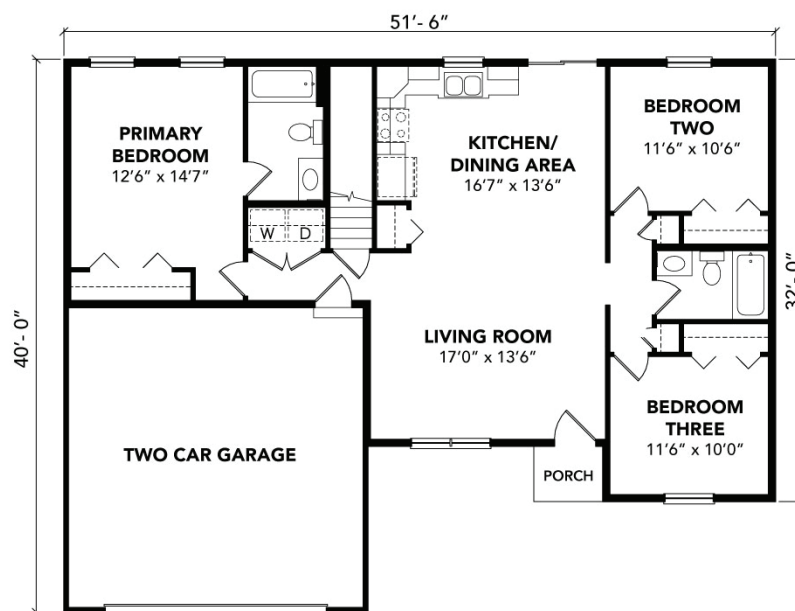
THE JEFFERSON

1,274 SF

3 BEDROOMS
2 BATHROOMS



ELEVATION A



FLOOR PLAN

FOR MORE INFORMATION, VISIT FINELINEHOMES.COM

All square footages, floor plans and dimensions are approximate and are subject to change without notice. Plans are shown with options not included in the base pricing and are for illustrative purposes only. Construction drawings and purchase contracts will take precedence over artwork.

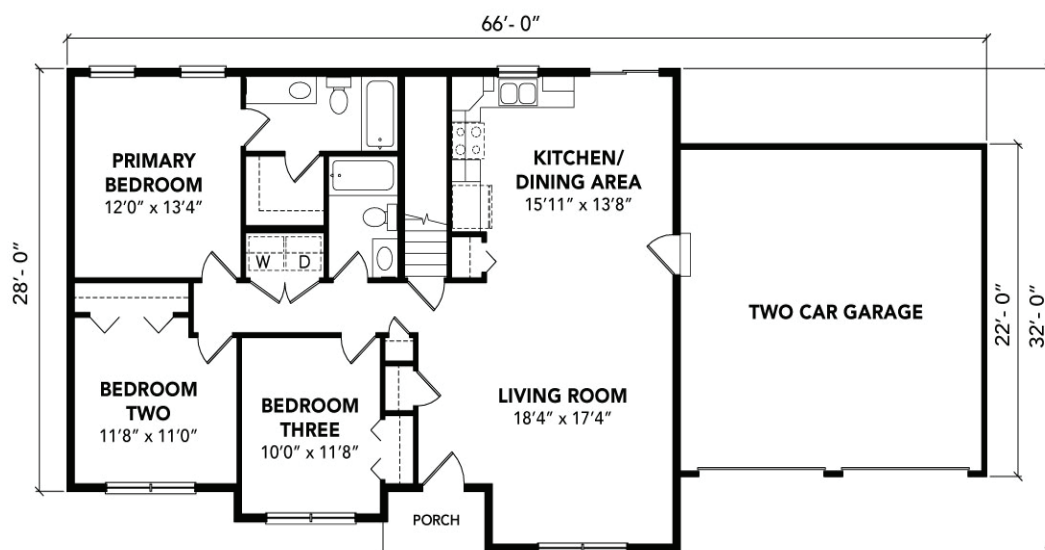
THE MONROE

1,310 SF

3 BEDROOMS
2 BATHROOMS



ELEVATION A



FLOOR PLAN

FOR MORE INFORMATION, VISIT [FINELINEHOMES.COM](https://finelinehomes.com)

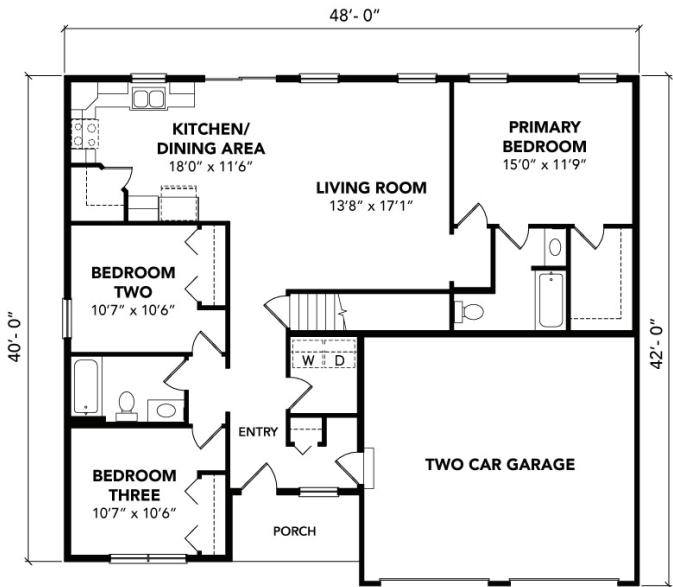
All square footages, floor plans and dimensions are approximate and are subject to change without notice. Plans are shown with options not included in the base pricing and are for illustrative purposes only. Construction drawings and purchase contracts will take precedence over artwork.

THE ROANOKE

1,417 SF 3 BEDROOMS
2 BATHROOMS



ELEVATION A



FLOOR PLAN

FOR MORE INFORMATION, VISIT FINELINEHOMES.COM

All square footages, floor plans and dimensions are approximate and are subject to change without notice. Plans are shown with options not included in the base pricing and are for illustrative purposes only. Construction drawings and purchase contracts will take precedence over artwork.

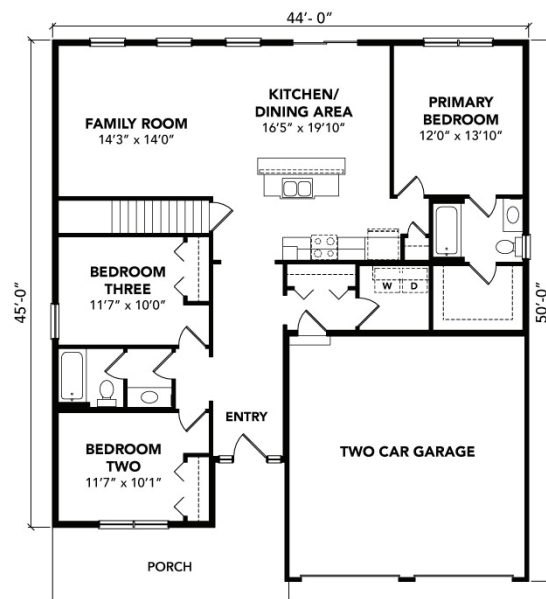
THE AUSTIN

1,547 SF

3 BEDROOMS
2 BATHROOMS



ELEVATION A



FLOOR PLAN

FOR MORE INFORMATION, VISIT FINELINEHOMES.COM

All square footages, floor plans and dimensions are approximate and are subject to change without notice. Plans are shown with options not included in the base pricing and are for illustrative purposes only. Construction drawings and purchase contracts will take precedence over artwork.

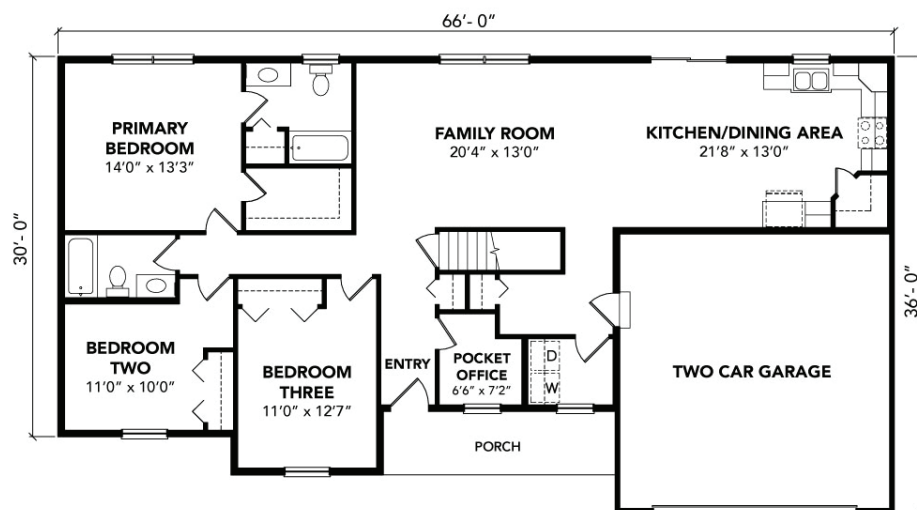
THE MADISON

1,632 SF

3 BEDROOMS
2 BATHROOMS



ELEVATION A



FLOOR PLAN

FOR MORE INFORMATION, VISIT [FINELINEHOMES.COM](https://finelinehomes.com)

All square footages, floor plans and dimensions are approximate and are subject to change without notice. Plans are shown with options not included in the base pricing and are for illustrative purposes only. Construction drawings and purchase contracts will take precedence over artwork.

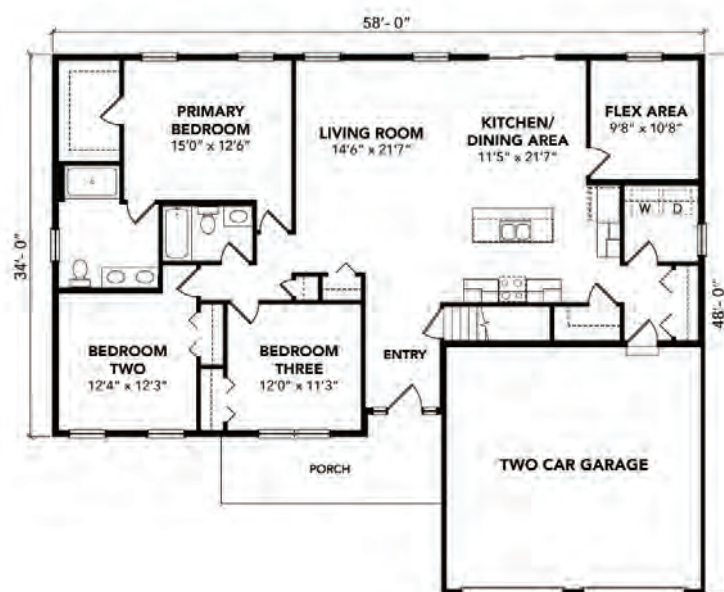
THE CLARKSVILLE

1,774 SF

3 BEDROOMS
2 BATHROOMS



ELEVATION A



FLOOR PLAN

FOR MORE INFORMATION, VISIT [FINELINEHOMES.COM](https://finelinehomes.com)

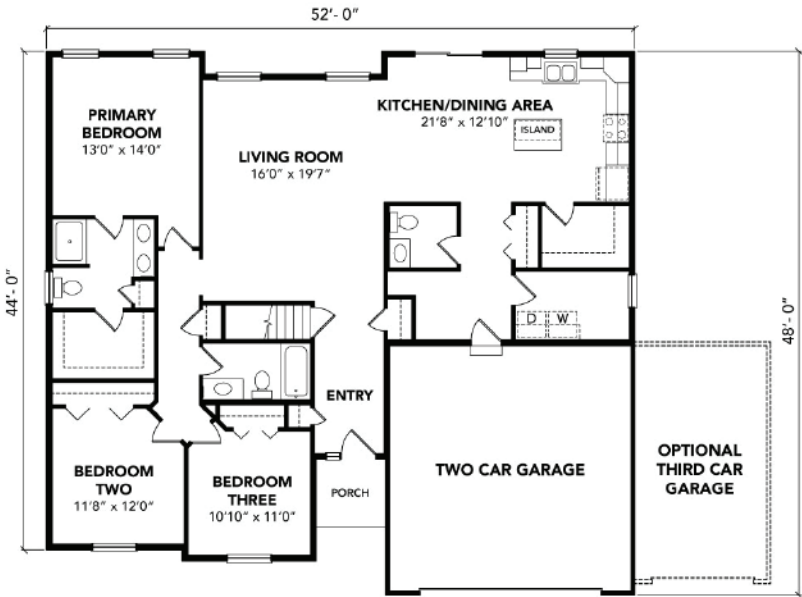
All square footages, floor plans and dimensions are approximate and are subject to change without notice. Plans are shown with options not included in the base pricing and are for illustrative purposes only. Construction drawings and purchase contracts will take precedence over artwork.

THE FENWICK

1,826 SF 3 BEDROOMS
2.5 BATHROOMS



ELEVATION A



FLOOR PLAN

FOR MORE INFORMATION, VISIT FINELINEHOMES.COM

All square footages, floor plans and dimensions are approximate and are subject to change without notice. Plans are shown with options not included in the base pricing and are for illustrative purposes only. Construction drawings and purchase contracts will take precedence over artwork.

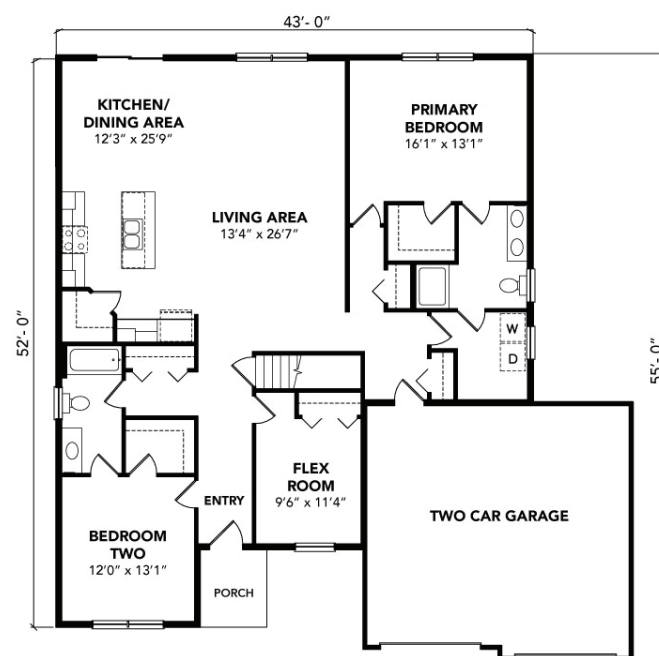
THE HUDSON

1,831 SF

2 BEDROOMS
2 BATHROOMS



ELEVATION A



FLOOR PLAN

FOR MORE INFORMATION, VISIT [FINELINEHOMES.COM](https://finelinehomes.com)

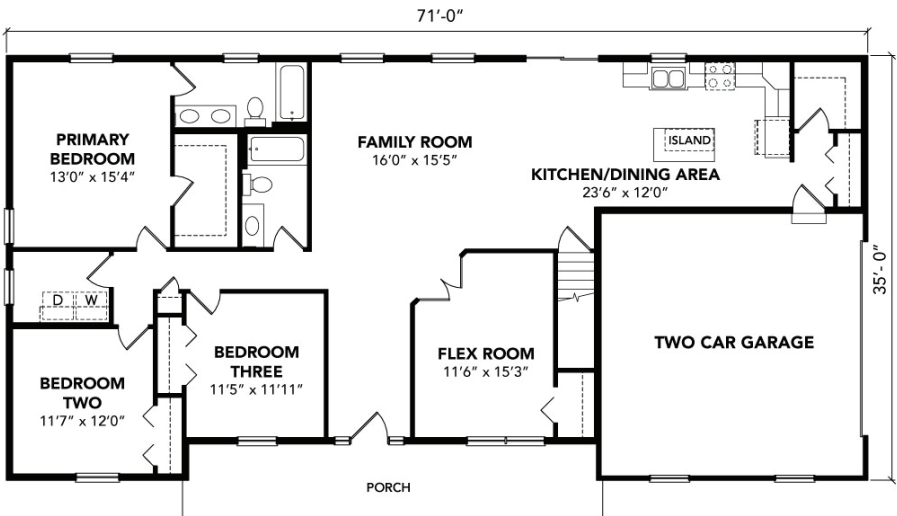
All square footages, floor plans and dimensions are approximate and are subject to change without notice. Plans are shown with options not included in the base pricing and are for illustrative purposes only. Construction drawings and purchase contracts will take precedence over artwork.

THE GREENVILLE

1,900 SF 3 BEDROOMS
2 BATHROOMS



ELEVATION A



FLOOR PLAN

FOR MORE INFORMATION, VISIT FINELINEHOMES.COM

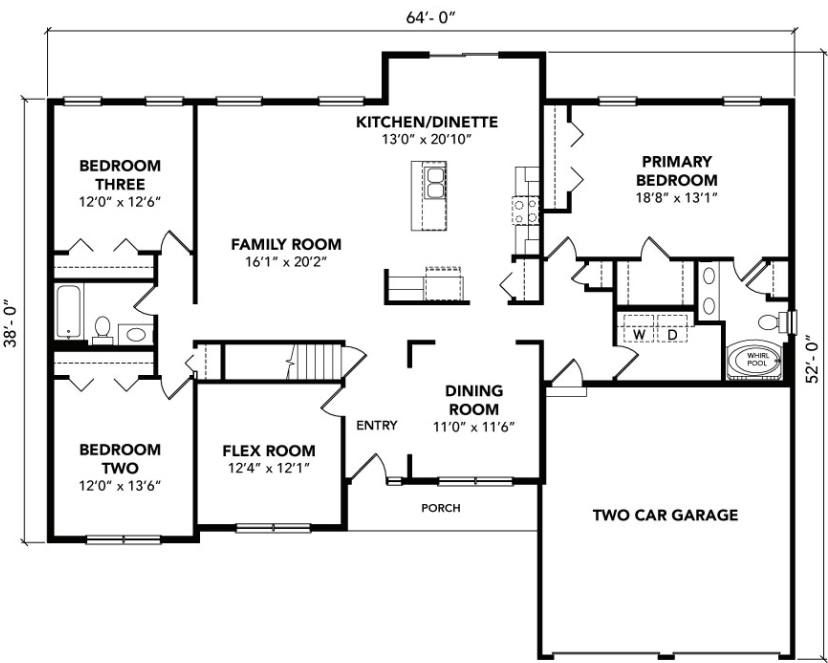
All square footages, floor plans and dimensions are approximate and are subject to change without notice. Plans are shown with options not included in the base pricing and are for illustrative purposes only. Construction drawings and purchase contracts will take precedence over artwork.

THE MONTEREY

2,106 SF 3 BEDROOMS
2 BATHROOMS



ELEVATION A



FLOOR PLAN

FOR MORE INFORMATION, VISIT [FINELINEHOMES.COM](http://finelinehomes.com)

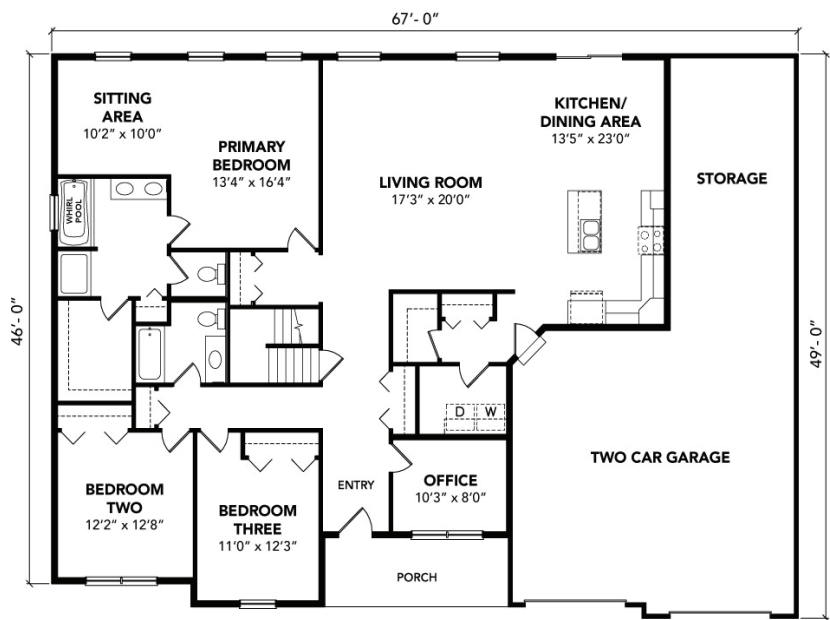
All square footages, floor plans and dimensions are approximate and are subject to change without notice. Plans are shown with options not included in the base pricing and are for illustrative purposes only. Construction drawings and purchase contracts will take precedence over artwork.

THE RUTHERFORD

2,202 SF 3 BEDROOMS
2 BATHROOMS



ELEVATION A



FLOOR PLAN

FOR MORE INFORMATION, VISIT [FINELINEHOMES.COM](https://finelinehomes.com)

All square footages, floor plans and dimensions are approximate and are subject to change without notice. Plans are shown with options not included in the base pricing and are for illustrative purposes only. Construction drawings and purchase contracts will take precedence over artwork.

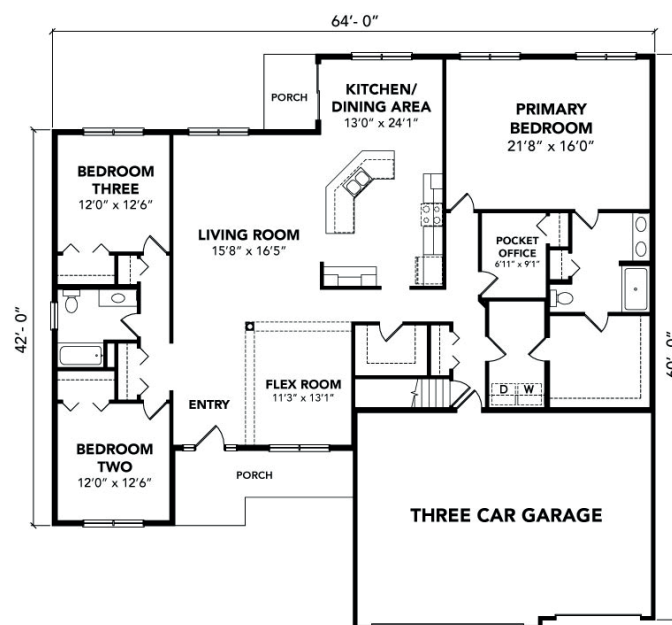
THE WINSLOW

2,441 SF

3 BEDROOMS
2 BATHROOMS



ELEVATION A



FLOOR PLAN

FOR MORE INFORMATION, VISIT [FINELINEHOMES.COM](https://finelinehomes.com)

All square footages, floor plans and dimensions are approximate and are subject to change without notice. Plans are shown with options not included in the base pricing and are for illustrative purposes only. Construction drawings and purchase contracts will take precedence over artwork.



CAPE COD FLOOR PLANS



THE HATTERAS

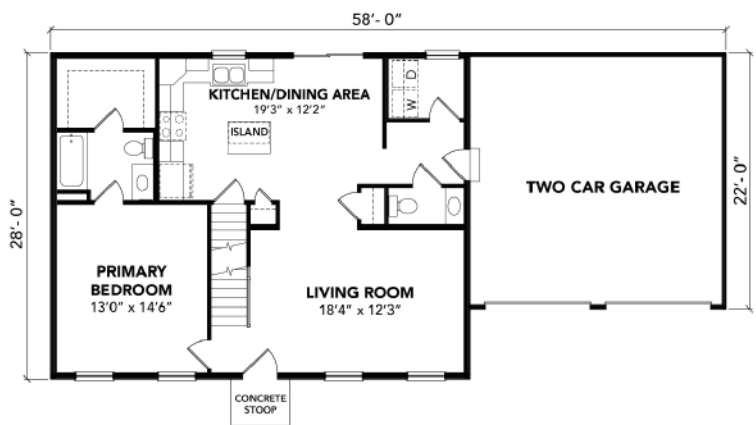
1,535 SF 2 BEDROOMS
2.5 BATHROOMS



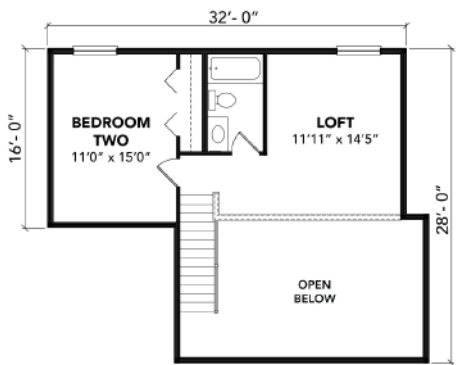
ELEVATION A



ELEVATION B



FIRST FLOOR
(ELEVATION A)



SECOND FLOOR
(ELEVATION A)

FOR MORE INFORMATION, VISIT [FINELINEHOMES.COM](https://finelinehomes.com)

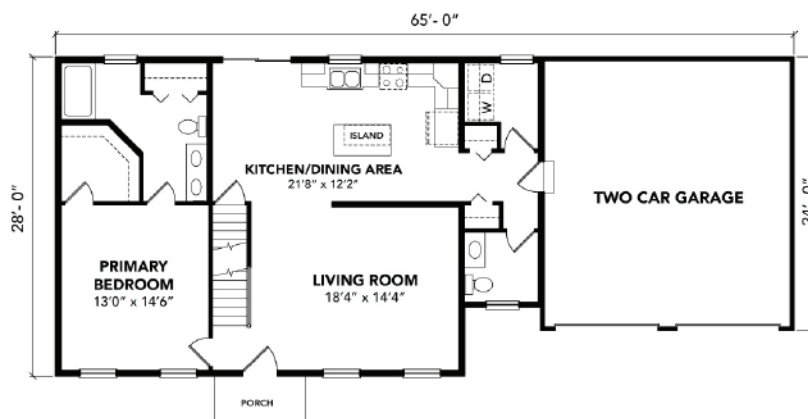
All square footages, floor plans and dimensions are approximate and are subject to change without notice. Plans are shown with options not included in the base pricing and are for illustrative purposes only. Construction drawings and purchase contracts will take precedence over artwork.

THE NEWPORT

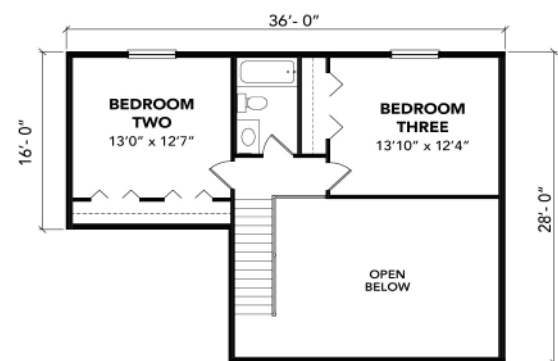
1,733 SF 3 BEDROOMS
2.5 BATHROOMS



ELEVATION A



FIRST FLOOR



SECOND FLOOR

FOR MORE INFORMATION, VISIT FINELINEHOMES.COM

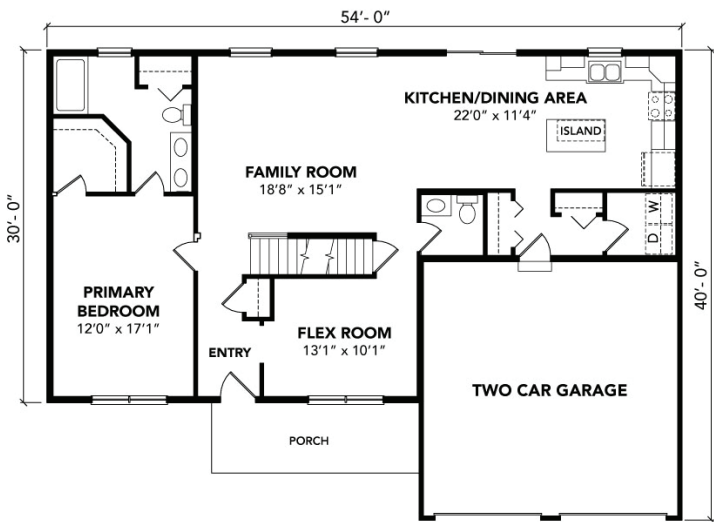
All square footages, floor plans and dimensions are approximate and are subject to change without notice. Plans are shown with options not included in the base pricing and are for illustrative purposes only. Construction drawings and purchase contracts will take precedence over artwork.

THE NOTTINGHAM

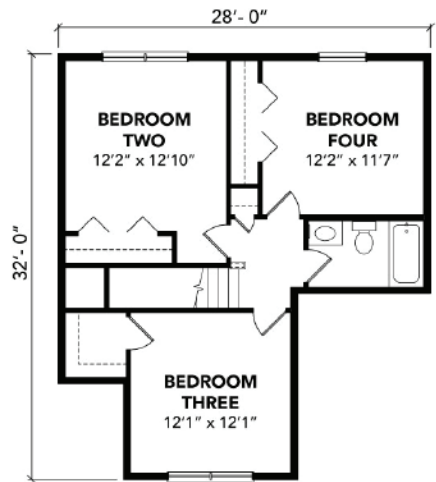
2,077 SF 4 BEDROOMS
2.5 BATHROOMS



ELEVATION A



FIRST FLOOR



SECOND FLOOR

FOR MORE INFORMATION, VISIT [FINELINEHOMES.COM](https://finelinehomes.com)

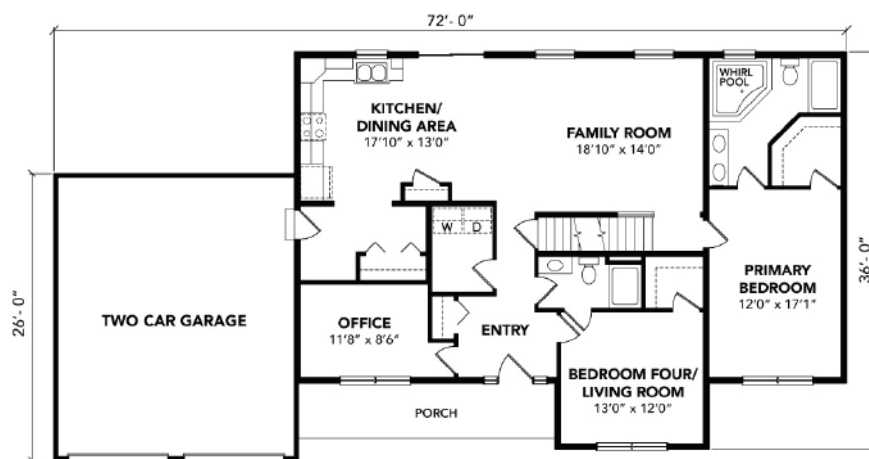
All square footages, floor plans and dimensions are approximate and are subject to change without notice. Plans are shown with options not included in the base pricing and are for illustrative purposes only. Construction drawings and purchase contracts will take precedence over artwork.

THE OAKRIDGE

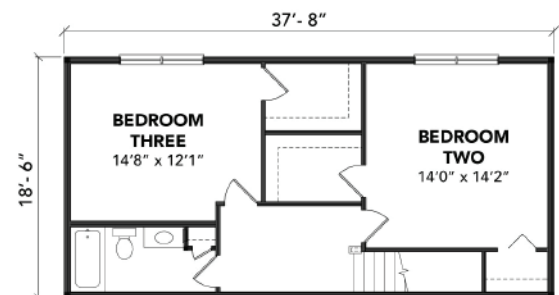
2,286 SF 4 BEDROOMS
3 BATHROOMS



ELEVATION A



FIRST FLOOR



SECOND FLOOR

FOR MORE INFORMATION, VISIT FINELINEHOMES.COM

All square footages, floor plans and dimensions are approximate and are subject to change without notice. Plans are shown with options not included in the base pricing and are for illustrative purposes only. Construction drawings and purchase contracts will take precedence over artwork.





“

Fine Line Homes turned our property into paradise. From start to finish, their products, patience, and professionalism transformed our dream into reality. We absolutely love our home and so does everyone who comes to visit. The continuous compliments from others verifies our decision.

- Jeffrey Molinaro & Kimberly Zamonas





FOR MORE INFORMATION & GALLERIES VISIT [FINELINEHOMES.COM](https://finelinehomes.com)

50 YEARS

FINE | LINE

HOMES

HARRISBURG

7300 Derry Street
Harrisburg, PA 17111
717.561.2040

HAZLETON

596 Susquehanna Boulevard
Hazle Township, PA 18202
570.455.3324

LEWISBURG

1189 Westbranch Highway
Winfield, PA 17889
570.524.7333

STATE COLLEGE

1426 Benner Pike
State College, PA 16801
814.237.5581

SAYRE

29720 Route 220
Athens, PA 18810
570.888.4676

WINSTON-SALEM

200 Peddycord Park Ct.
Kernersville, NC 27284
336.413.1400

info@finelinehomes.com | finelinehomes.com | 866.806.4420